



## SONY SMARTCAM RUNNING SCORPION VISION SOFTWARE®



*XCI series, Sony's next generation Smart cameras*

In close cooperation with Sony, we have integrated the Scorpion Vision Software® into the XCI-SX100 and XCI-V100 SmartCams. The combination of high resolution images and Scorpion Vision Software's world class gauging tools is ideal for high precision measurements and robot systems.

Clear monochrome images are captured by the advanced 1/3" type IT CCD sensor at 1280x1024 SXGA resolution and are processed. Vertical and Horizontal binning reduces image size to 640 x 512 and improves image quality. The cameras are also available in colour.

A full version of the Scorpion Vision Software®, running on top of the Windows XP Embedded operating system, processes the images inside the camera.

The open architecture Sony SmartCam is the perfect companion for Scorpion Vision Software®. The software is well proven on both the first and second generation of Sony SmartCams. The Intelligent Cameras are supported by the Basic Scorpion release.

In addition some bundles are released with either XCI-SX100 or XCI-V100 in black and white or colour:

*Sony Scorpion Lite SmartCam*  
*Sony Scorpion Basic SmartCam*  
*Sony Scorpion Premium SmartCam*

More information on Scorpion Vision Software® is found in these documents:  
PD-2009-0004-A Scorpion 7 Lite.pdf  
PD-2009-0005-A Scorpion 7 Basic.pdf  
PD-2009-0006-A Scorpion 7 Premium.pdf

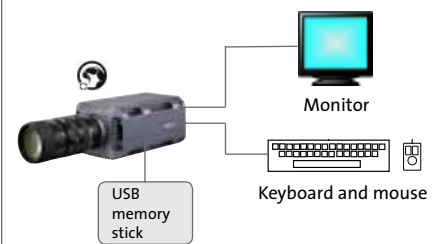
### APPLICATION AREAS

*The Sony Scorpion SmartCam is especially well suited for robot vision applications. The camera is directly mounted with an RS-232 to the master robot.*

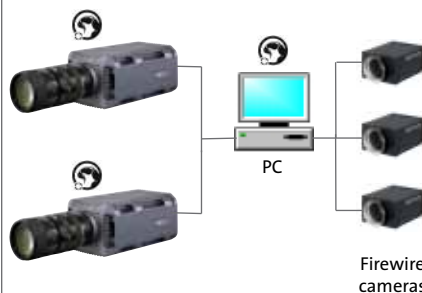
### STANDALONE OPERATION



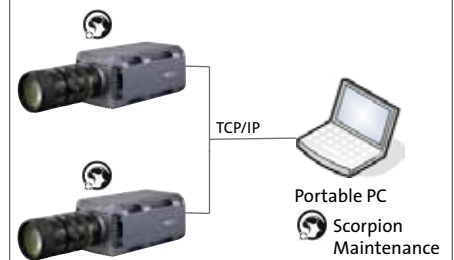
### STANDALONE CONFIGURATION




### NETWORK OPERATION



### NETWORK CONFIGURATION



The portable PC is used for profile configuration, profile transfer and as a remote desktop.

 - running Scorpion Vision Software®



### EQUIPMENT

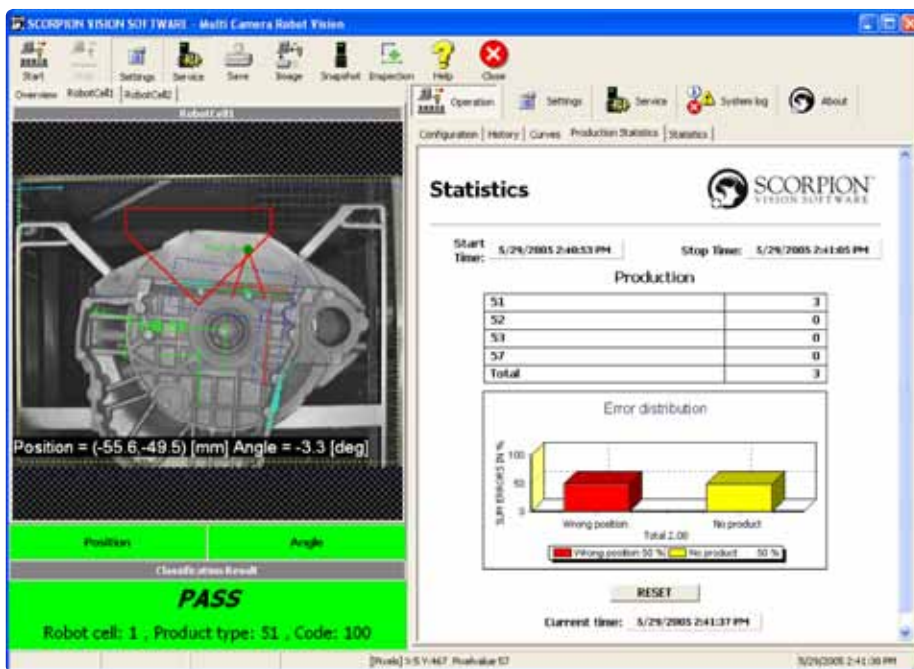
*Scorpion Vision Software®*  
*Sony SmartCam XCI Series*



Tordivel as  
Storgata 20, N-0184 Oslo, Norway  
www.scorpionvision.com



## TECHNICAL DATA



### LINKS TO MORE INFORMATION

#### DOCUMENTS

Scorpion 3D SmartCam  
Scorpion Vision Software Product Data  
Scorpion Vision Software Overview  
Scorpion Vision Software Tools  
Scorpion SmartCam Tutorial

#### ON THE WEB

www.scorpionvision.com  
tordivelblog.wordpress.com  
Support web - scorpion.tordivel.no

#### For more information:

Tordivel AS  
Phone +47 2315 8700  
Fax +47 2315 8701  
office@tordivel.com  
www.scorpionvision.com

For more information on the  
Sony SmartCam see  
www.sonybiz.net/vision

Robot Vision System using Sony SmartCam with Scorpion Vision Software®.

### TECHNICAL DATA

#### Operating System

- Windows XP Embedded
- 1 GByte Flash Card

#### Network Support

- XP Remote Desktop
- XP Remote Assistance
- FTP / HTTP
- Remote Disk Sharing
- TCP/IP

#### Language Support

- English, German and Norwegian

#### Compact and Lightweight

- 94 (W) x 70 (H) x 139,5 (D) mm
- 760 g

#### Sony Smart Camera

- XCI-SX100: 1280 x 960 (SXGA)
- XCI-V100: 640 x 480 (VGA)
- CPU x86 1GHz, VIA Eden ULV
- 512 MByte DDR2-SDRAM
- 12 Volt DC power
- Monochrome 1/3" CCD
- Progressive Scan
- Frame rate up to 15 fps
- External trigger
- Ethernet, RS-232 and Digital IO

More details are found in  
Sony XCI series.pdf

Specifications might change without any notification.

Scorpion Vision Software® is a registered trademark of Tordivel AS.